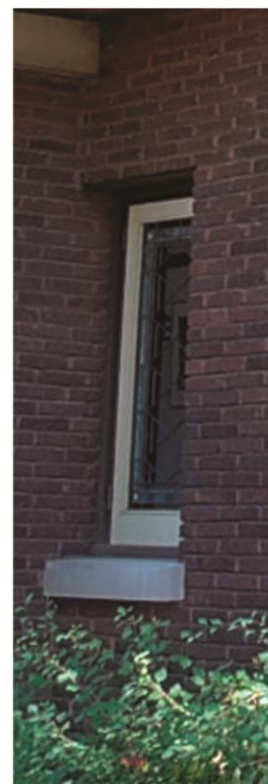


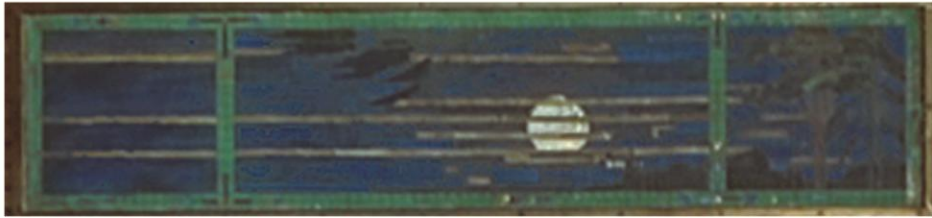
300 Hill Street Red Wing MN 55066

<http://www.prairieschoolarchitecture.com>



Barker & Hedges







Purcell and Elmslie had offices in Minneapolis, Chicago, and Philadelphia until 1921.

Built in 1913, the Hoyt House originally had no garage. The potting room and garage were added in 1916.



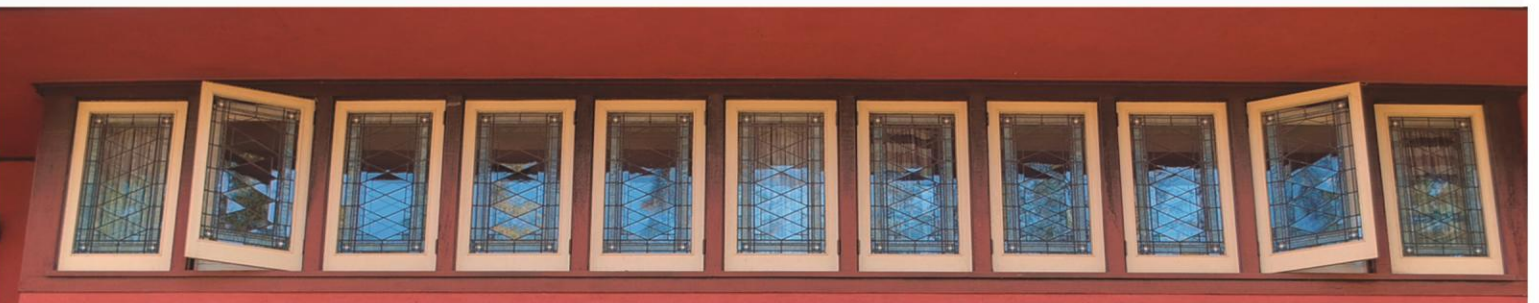
While Frank Lloyd Wright may be the most recognizable of the Prairie School architects, there were actually about 20 idealists who furthered this architectural style.



Frank Lloyd Wright championed the Prairie School Style, beginning with the design of the Winslow House in 1893.



HOYT HOUSE
Due to its progressive architectural style, the neighbors referred to it as "that Chinese house."



The firm of Purcell and Elmslie was the second most commissioned of the Prairie School architectural style. The most commissioned was Frank Lloyd Wright.